



Enriching Lives



# Global Power Solutions



## Kirloskar Green DV Series Genset



**KIRLOSKAR**  
**GREEN**  
POWER IDEAS



## About us...

### **Kirloskar Engines: Prime mover to the Indian nation.**

Kirloskar Oil Engines Limited, founded in 1946 and popularly known as KOEL is India's leading manufacturer of the finest and widest range of diesel engines - from 3 hp to 800 hp and from 2400 hp to 11000 hp. The Kirloskar engines are manufactured in both air-cooled and water-cooled version. Our engines (with annual manufacturing volumes exceeding 320,000 engines) are manufactured in a most eco-friendly environment in India at our Pune - Khadki, Kolhapur - Kagal, Rajkot, Nashik Plants. The manufacturing plants are well equipped with most advance and high-tech machineries, having state of the art cutting edge technology for machining of all the critical components. Kirloskar engines are used as prime movers in Industrial, Agriculture, Power generation as well as Marine Applications.

The engine manufacturing facilities are continually upgraded and improved to ensure the requisite quality at competitive cost. Critical components like crankcases, crankshafts, camshafts, gear casing, cylinder heads and connecting rod are manufactured in-house. KOEL also manufactures for its exclusive use, Special Purpose Machines to achieve critical degrees of precision that international specifications demand.

### **We pursue highest quality adherence for zero defect**

"The certification demonstrates our commitment to excellence"

- 🌿 ISO 9001 certification for Quality Management System since 1992 by ABS QE, Inc.
- 🌿 ISO/TS 16949:2002 for Quality Management System since 2007 by ABS QE, Inc.
- 🌿 ISO 14001 certification for Environment Management System since 1999 by TUVNORD.
- 🌿 OHSAS 18000:2007 certificate for Health, Safety & Environment since 2009 by TUVNORD.

At Kirloskar, we believe that the industry and the environment can, and must, coexist in a mutually beneficial way. Bringing this thought into practice is what has driven us to manufacture engines that are not only eco-friendly, but are also manufactured in an environment-friendly way.

Effective support to the product sold is available through the distributors selling the product. Trained technicians and availability of spares at the distributor locations helps minimize the engine downtime.

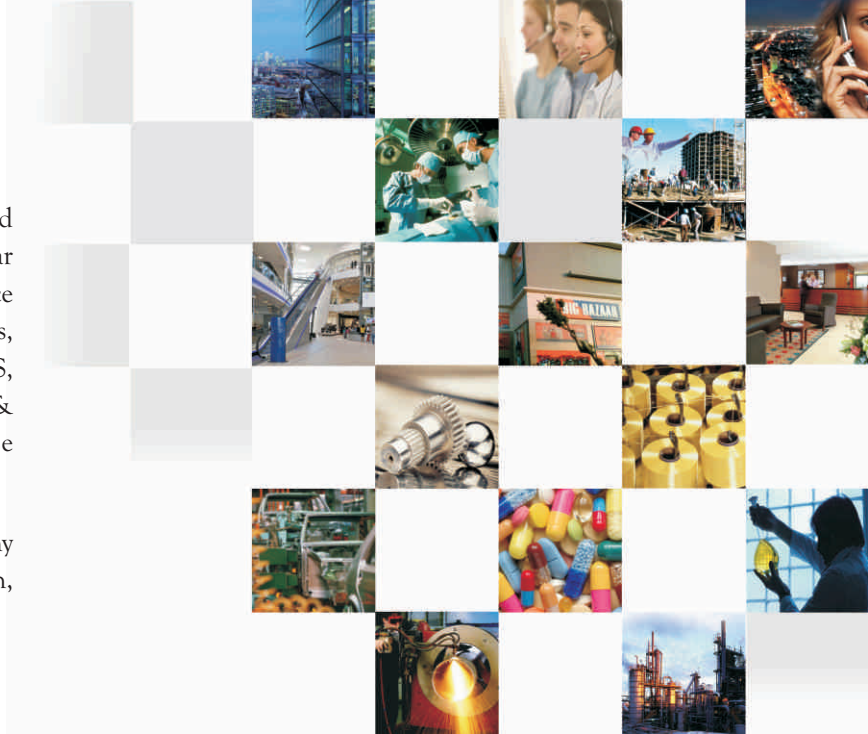
### **All pervasive IT in operations**

Having foreseen the power of the IT to transform the businesses, way back in 1998 KOEL installed the world's leading Enterprise-wide Solution (ERP) - Oracle®. This installation is noted to be one of the most comprehensive installations of Oracle in the manufacturing industry. The installation of ERP in 1998 was followed up with net enabled business processes in 2000. With this initiative, Kirloskar Service Dealers, OEM's, Area Sales Offices, Suppliers and the Logistic providers form a digital community that is ever ready to respond to each customer need efficiently. The Service dealerships are able to respond to customer needs quickly and efficiently by accessing round-the-clock the latest service information and parts availability over the internet, 24 hours a day, 365 days a year, including a leap year.

## Market we serve

KOEL is the market leader & the most preferred brand of customers from power generation & cellular industry. The major market we serve is the service industry like Telecom, Retail, Hotels, Hospitals, Banks, Educational & Financial Institutes, IT/ITES, Multiplex, Infrastructure industry like residential & commercial complex, shopping malls, high-rise buildings and many more.

Our customized power solution is ideally suited for any application whether it is standby or prime application, open or sound proofed.



\*With assistance from channel partners

## Kirloskar Green Power Advantages

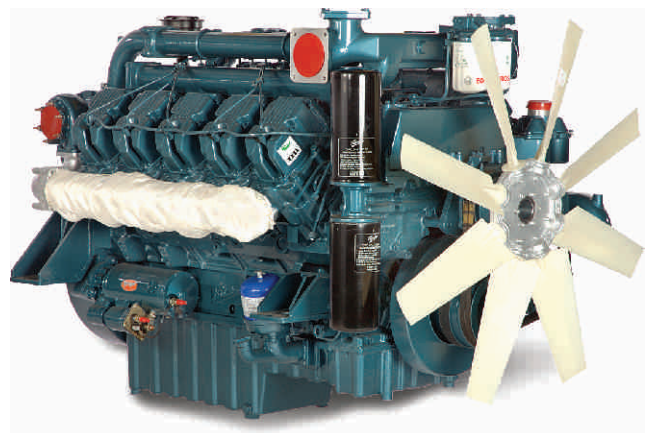
### What makes us different :

Unique Power Ideas, that ensures total value for your money.

For us every business is unique & we know that the power requirements of every business are different. We offer complete power assistance right from genset selection, installation, commissioning, training on site to AMC. KOEL provides ideal power solution that best fits your market and power need.

## Standard Scope of Supply

- 🌿 Kirloskar diesel engine
- 🌿 Compact Brushless, single bearing design alternator
- 🌿 Formed base plate.
- 🌿 Sound Attenuation Canopy, (for silent Genset)
- 🌿 Powder coated sheet metal DC set control panel complete with in built digital control module for displaying voltage, current, frequency, hour run, lube oil pressure, temperature, MCCB, wiring diagram pasted inside the panel.
- 🌿 Fuel tank of capacity for 8hr running at 75% load complete with inlet spout strainer and fuel level indicator.
- 🌿 24V Electrical system.
- 🌿 Automatic shut down incase of fault detection.



## Technical Specifications of DV Series Generating Sets\*

380V/415V, 3-ph, 50 Hz, 0.8 pf @ 1500rpm

DESCRIPTION		UNITS	KG320W/WS	KG400W/WS	KG500W/WS	KG600W/WS
Output Rating	Continuous	kVA	320	400	500	600
	Standby		352	440	550	660
<b>ALTERNATOR</b>						
Alternator Type/Construction			Brushless, Single Bearing			
Resistive Current	at 380V	Amps	389	486	608	729
	at 415V		356	445	557	668
Voltage Regulation		%	±1%			
Excitation			Self			
Insulation			Class H			
<b>ENGINE</b>						
Model			DV8	DV8	DV10	DV12
Cyl. Arrangement/No. of Stroke			V-Type / 4 stroke			
Aspiration			TA*			
Output Rating		bhp	400	490	608	723
Bore x Stroke		mm	130 x 150			
Piston Displacement		Ltrs	15.91	15.91	19.91	23.88
Fuel Type			Diesel			
Specific Fuel Consumption @ 100% load		gm/hp-hr	143**			
Lube Oil Sump Capacity		Liters	41	41	45	50
Coolant Capacity		Liters	29	29	133	144
Battery			2 x 12V, 180AH			
Method of Starting		Volts	24V Electric			
<b>NOISE LEVEL (CANOPY SET)</b>						
dBA at 7 mtrs			70			
<b>DIMENSIONS</b>						
Canopy Set	Length (mm)		5750	5750	6250	6750
	Width (mm)		2250	2250	2250	2250
	Height (mm)		2550	2550	2550	2550
Dry weight		Kg	5750	6000	6650	7500
Open Set	Length (mm)		4000	4000	5000	6000
	Width (mm)		1900	1900	1900	1900
	Height (mm)		2100	2100	2300	2500
Dry weight		Kg	4000	4200	4750	6000

In line with our policy of continuous product Development, We reserve the right to change the specification without notice.

### \* Notes:

- (a) Engine rating are gross rated output to IS-10002, BS-5514, DIN-6271, ISO-3046/1 standard as appropriate.  
(b) Genset ratings are according to Iso 8528
- \*TA - Turbocharged After Cooled
- \*\* Declared SFC for well run engine tested at standard conditions (+5% Tolerance applicable as per ISO3046)
- For continuous ratings 10% overload is permitted for 1 hour in every 12 hours consecutive run. For stand-by ratings no further overload is permitted.
- Power reduction: For ambient conditions (i.e altitude, air temperature, humidity) worse than the standard operating conditions, the engine output should be derated in accordance with relevant standards. Please consult KOEL for Precise deration calculations.
- For any other voltage than specified, please consult KOEL.

## KIRLOSKAR OIL ENGINES LIMITED

### Kirsons Trading (S.A.) (PTY) Ltd.

Unit B1, The Stables Business Park, Cnr of third avenue & Second Road,  
Limbro Park, Modderfontein, Johannesburg.  
Tel.: +27(0) 11 553 6900/6903 Email: kirsons@kirloskar.co.za

### Kirloskar Middle East FZE

P.O. Box 4178, Ajman Free Zone, Ajman, U.A.E.  
Tel.: +971(6) 745 7667. Fax: +971(6) 744 8636  
E-mail: kmef-admin@kirloskar.ae

### Kirloskar Kenya Ltd.

P.O. Box 60061 off Dunga Road, Nairobi, Kenya.  
Tel.: +254 20 653 6632. Fax: +254 20 653 3390  
Email: rspatil@kirloskar.co.ke

### Head Office :

Laxmanrao Kirloskar Road, Khadki, Pune 411 003, India.  
Tel.: +91(20) 2581 0341 / 2581 5341 Fax : +91(20) 2581 3208, 25810209  
For enquiries please visit www.kirloskar.com or email: export@kirloskar.com

Authorised Distributor / Dealer



Enriching Lives